

# 35 HEDGE ROSE Blvd.



GREAT ROOM	18x19
DINING ROOM	12x12
KITCHEN	18x19
MASTER BEDROOM	14x16
BEDROOM 2	11x12
BEDROOM 3	11x15
BEDROOM 4	12x12

**\$238,000**



**SOUTHERN PROPERTIES**

**Bob & Wendy Turner**

901.755.7708

[www.southernprop.net](http://www.southernprop.net)

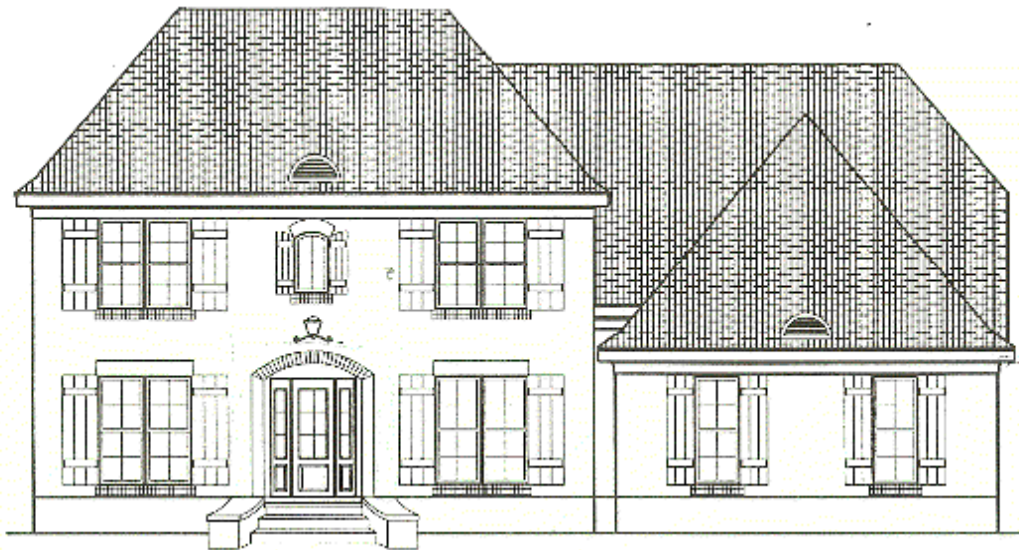
Information deemed reliable but not guaranteed. All plans, elevations & prices subject to change without notice.

**Built By**



**PRIMROSE PLAN** 4 BEDROOMS/3 BATHS  
Split bedroom plan with formal dining room, **SEE-THRU fireplace between family room & kitchen** with breakfast bar. Tile in island kitchen plus stainless steel appliances. Hardwood in family room, formal dining room and entry. BALCONY OVERLOOKS FAMILY ROOM. LARGE LAUNDRY ROOM WITH ROOM FOR FREEZER. ALL BEDROOMS HAVE WALK-IN CLOSETS. LUXURY MASTER SUITE WITH WHIRLPOOL AND SEPARATE SHOWER. COVERED PATIO. FLOORED ATTIC COULD BE FUTURE 17 x14 PLAY ROOM UP. LARGE CORNER LOT!  
LOTS OF ATTIC SPACE! APPROX 2420 SF.

# Primrose

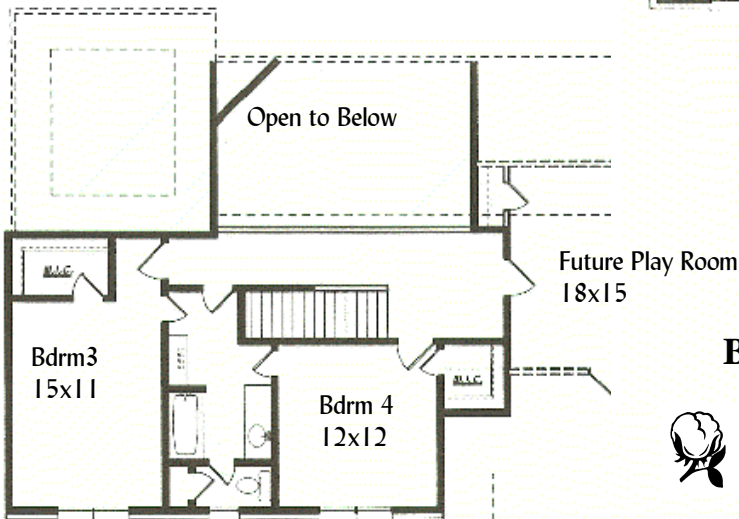
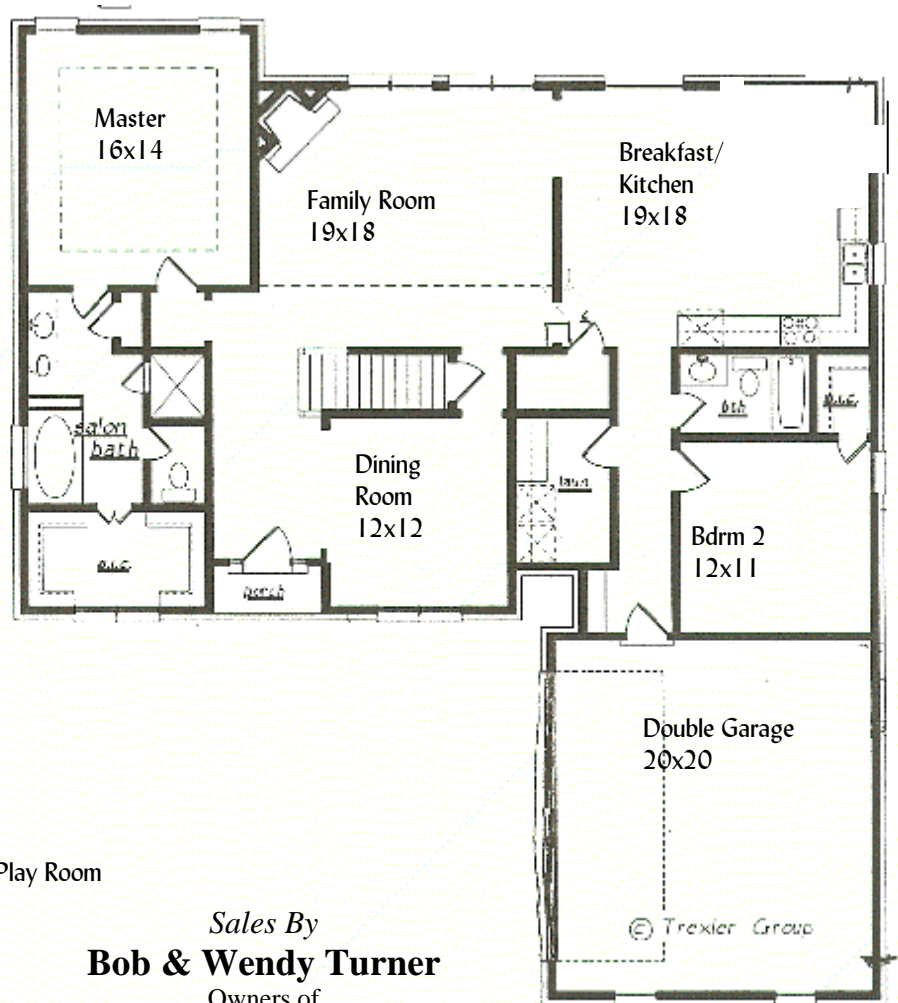


Built By



Artist's conceptions, all plans subject to change.

Approx 2420 SF



Sales By  
**Bob & Wendy Turner**  
 Owners of



**SOUTHERN PROPERTIES**

(901) 755-7708 Office

[www.southernproperties.net](http://www.southernproperties.net)

[wturner@southernprop.net](mailto:wturner@southernprop.net)

Wendy's Cell: 901-550-1800

© Trexler Group